



# **The Special Pharmaceutical Benefits Program (SPBP) Data Update**

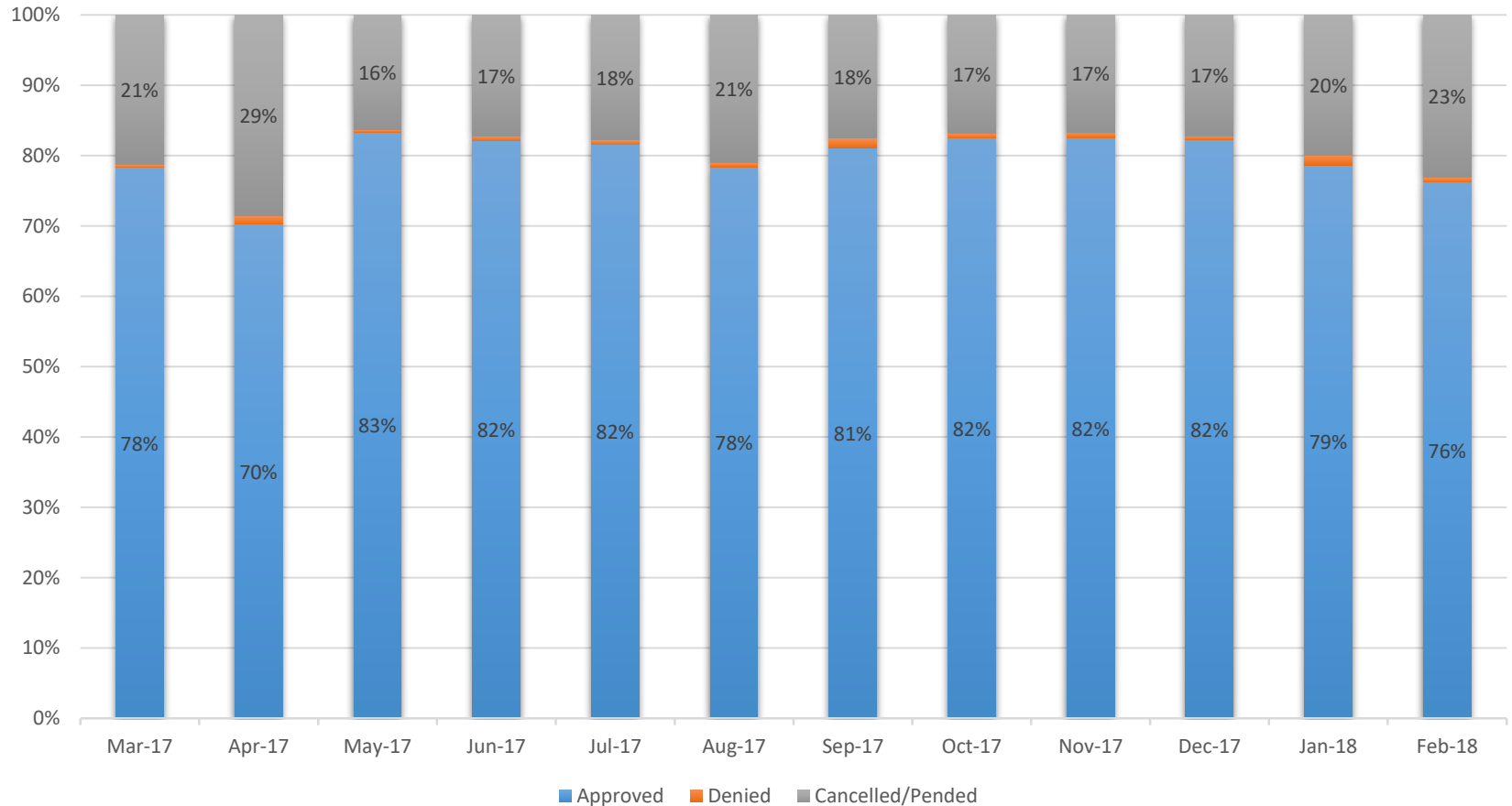
**SPBP ADVISORY COUNCIL  
APRIL 26, 2018**

# SPBP Enrollment Data

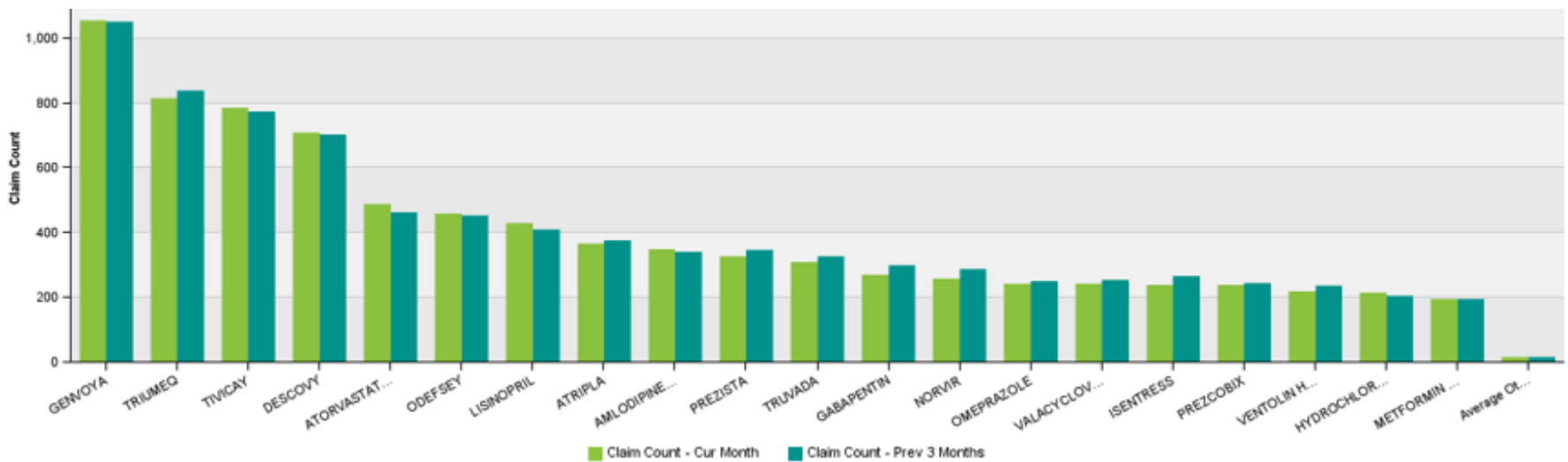
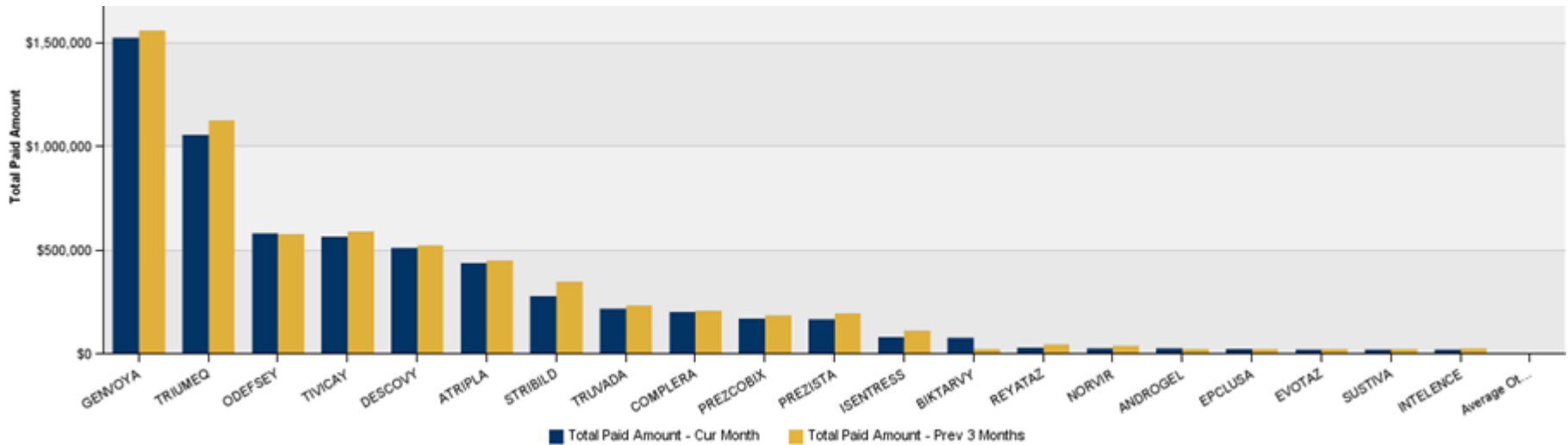
**Apr. 1, 2017– Mar. 31, 2018**

- Total enrolled: 8207
- Total clients served: 7446
- Clients with case managers: 5959
  - 72.6% of enrollees
  - 80% of clients served

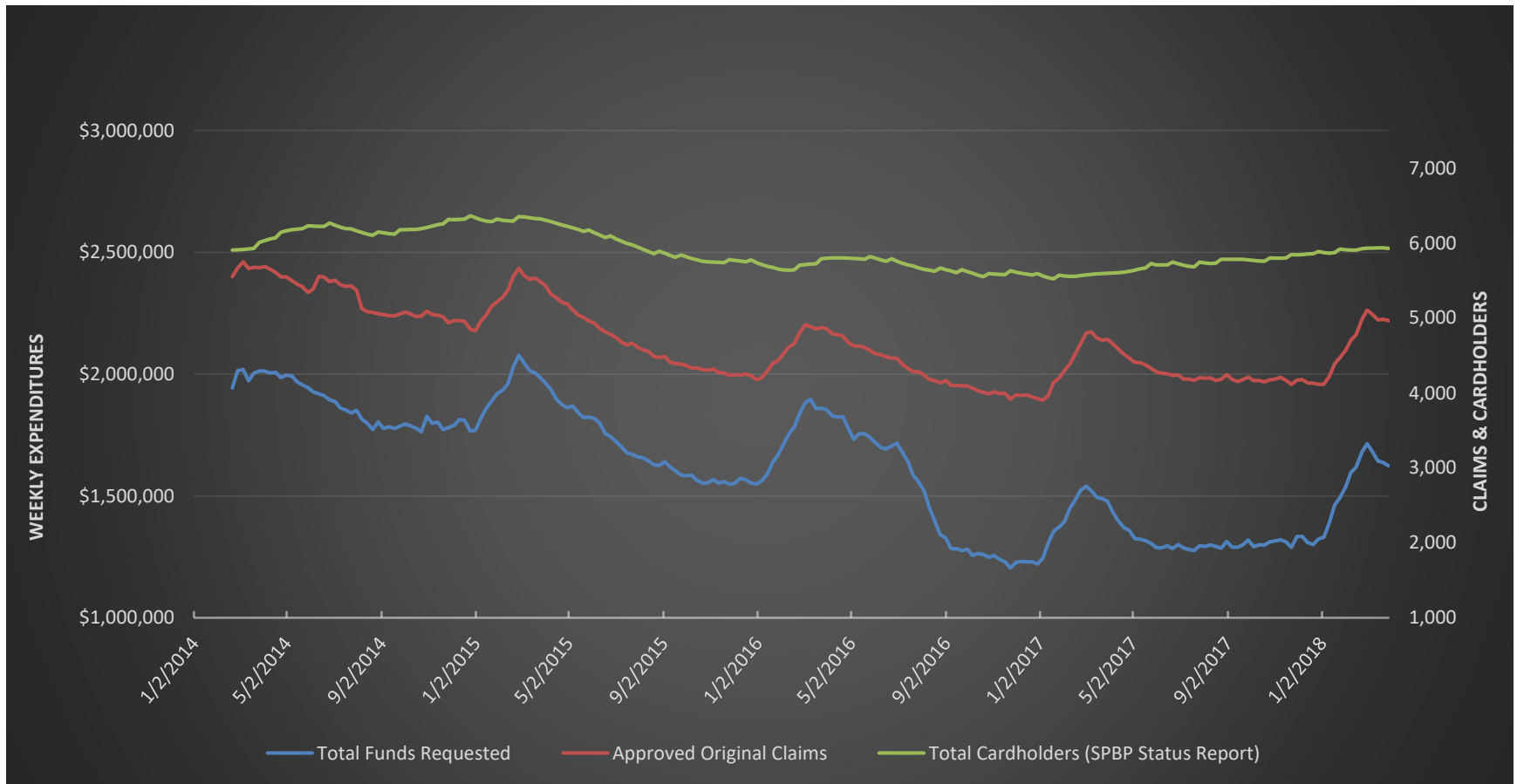
# Enrollment Snapshot



# Top 20 Drugs (March 2018)



# SPBP Weekly Expenditures



# Opiates PDMP

	8/1/15 - 7/31/16	1/1/17 - 12/31/17
Enrolled Clients	8,087	7,950
Distinct Clients with 1+ Opioid claim	1,239	591
% Enrolled clients with 1+ Opioid claim	15.3%	7.4%
Paid Opioid Claims	5,424	2,946
Claims per client with 1+ Opioid claim	4.38	4.98
Average quantity dispensed per Opioid claim	77.6	82.5
Average days supply per Opioid claim	22.02	24.14
Count of new Opioid users*	714	301
Clients with drug concurrencies	201	72
Clients with drug concurrencies - Average concurrencies	5.4	6.2
Clients with prescriber concurrencies	135	40
Clients with prescriber concurrencies - Average concurrencies	2.1	2.5
Clients with pharmacy concurrencies	83	23
Clients with pharmacy concurrencies - Average concurrencies	2.4	2.5

# Online Enrollment Demo

- [MRx Enroll](#)
- [MRx Enroll link 2](#)

# Upcoming Projects

- Ongoing work on 2017 ADAP Data Report (ADR) submission





# Questions?

[c-sehoffma@pa.gov](mailto:c-sehoffma@pa.gov)